



Supplemental Sailing Instructions



ISORA Offshore Series 2024

Race 9 02 – Offshore Race Weighted at 1.2

Pwllheli – Dun Laoghaire

Organised by the National Yacht Club www.nyc.ie and CHPSC

Date	Class	Start
Saturday 25 th May 2024	Class 2	08.00hrs
	Class 1	08.15hrs
	Class 0	08.30hrs
Same course for all classes		

This Supplementary Information MUST be read in conjunction with the MUSTO ISORA OFFSHORE SERIES 2024 Notice of Race and General Sailing Instructions.

For details see ISORA website – www.isora.org

On-Line Results by Sailwave





MUSTO ISORA Offshore Race No 9 O2 - 2024

Pwllheli - Dun Laoghaire Offshore Race

Supplemental Sailing Instructions

The responsibility for a boat's decision to participate in a race or to continue racing is hers alone. (RRS Fundamental Rule 3)

1. Organisation.

- 1.1. The MUSTO ISORA Offshore Race No.9 O2 is organised by the National Yacht Club, CHPSC and ISORA.
- 1.2. Enquiries, correspondence and entries should be sent to: - ISORA Chairman chair@ISORA.org

2. Rules.

- 2.1. The Racing will be governed by the 'rules' as defined in *The Racing Rules of Sailing* (RRS) and the ISORA General Sailing Instructions 2023.
- 2.2. IRC rules part A, B & C shall apply to IRC racing.
RRS part 2 rules will be replaced with the right-of-way rules of the International Regulations for Preventing Collisions at Sea (IRPCAS) between the times of local sunset and sunrise; or government right-of-way rules if applicable. A scoring penalty (RRS44.3) will be applicable during these times.
- 2.3. Crew numbers shall be limited to the maximum number specified on the IRC Certificate. IRC Rule 22 4.2
- 2.4. The requirements of Category 3+ Liferaft of the OFFSHORE SPECIAL REGULATIONS 2021-2024 apply to this event. Details of these are on the ISORA website.
- 2.5. In the event of conflict, this ISORA 2024 Supplemental Sailing Instructions (SSIs) will prevail. This changes RRS 63.7

3. Entries, Registration & Eligibility

- 3.1. Competitors for the MUSTO ISORA Offshore Race must complete the entry form and pay the on-line race fee to ISORA – see the ISORA [web site](#)
- 3.2. The MUSTO ISORA Offshore Race will provide racing for the ISORA Classes; Zero, One and Two or as amended.
- 3.3. Class Flags will be flown from the backstay of each competing yacht.
- 3.4. Yachts shall belong to or be chartered to and be under the control of a member of a yacht club affiliated to the IS or RYA or other equivalent national authority.
- 3.5. The Race Committee reserves the right to refuse any entry and/or to ask any boats to complete further undertaking or declarations before accepting their entry.

4. Measurement

- 4.1. A valid and current IRC rating certificates must be presented on request to the Sailing Committee.

5. Compliance with Class Rules; Certificates

- 5.1. The Race Committee may inspect or measure any boat or personal equipment, at any time.

6. Changes in Sailing Instructions

- 6.1. Any change to the Supplemental Sailing Instructions or General Sailing Instructions will be posted on the ISORA webs Site by 18.30hrs on the day before it will take effect.

7. Schedule of Races.

- 7.1. The race schedule is shown on the front page of this Supplemental Sailing Instructions.
- 7.2. There will be three starts.
- 7.3. The type of racing will be a long Offshore Race.

8. Time of Start

- 8.1. The race start times will be as shown on the front page of this SSIs or as amended.
- 8.2. The start may be broadcast on VHF Channel 17

- 8.3. The race will be started by using RRS 26, with the warning signal being made 5 minutes before the starting signal. Proposed Starting Times are as follows:

IRC 2 Warning Flag No.2	IRC One Warning Flag No. 1	IRC Zero Warning Flag No. 0	Event	Signal
0755	0810	0825	Warning	Warning Flag Displayed – Class Flag
0756	0811	0826	Preparatory	Preparatory flag displayed - Blue Peter up
0759	0814	0829	One Minute	Preparatory flag removed - Blue Peter down
0800	0815	0830	Start	Start - Class flags down

9. Registration of Crew – ISORA Crew Manager

- 9.1. Skippers must register the following details, for all crew members, on the 'ISORA Crewmanager App':
- 9.2. Crew Name and mobile phone number
- 9.3. Shore Contact Name and phone number for each crew member
- 9.4. The information will only be used for safety purposes and in an instance of an emergency.

10. STARTING LINE

- 10.1. The starting line is a transit of the orange pole on the CHPSC Bridge, a white mast with an orange top section on the foreshore and the ODM (mark O) The seaward end of the line is bounded by an ODM (mark 0). Boats cross this line in the direction of the first mark of the course, to start.

11. THE COURSE

- 11.1. The course is approximately 80 miles long. The course is as follows:
 - STARTING LINE at Pwllheli as defined in this Supplemental Sailing Instruction
 - PSC 2 (Racing Turning Mark) (P) 52° 52.400'N 04° 25.580'W
 - **Passing NOT Rounding** ISORA Dublin Bay Virtual Mark (S) 53° 17.110N 6° 00.100W
 - Finish line

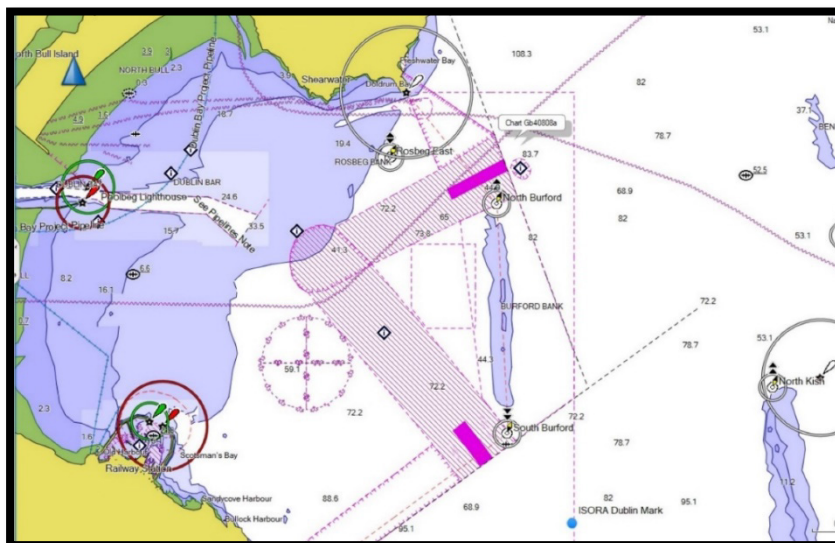
Any amendments to the Course will be and published on the ISORA web site and may be communicated to all entrants by WhatsApp and email on the day before the start.
- 11.2. The course may be confirmed afloat to the competitors on VHF CH 17 before the start.

12. TSS at South Burford & avoidance of drilling work on Bray Bank

- 12.1. Please be aware that commercial vessels will be navigating in or approaching the traffic separation schemes in that vicinity; please be aware that Rule 10 of the International Regulations for the Prevention of Collisions at Sea requires that "a sailing vessel shall not impede the safe passage of a power-driven vessel following a traffic lane" it further states "(f) A vessel navigating in areas near the terminations of traffic separation schemes shall do so with particular caution" and "(h) A vessel not using a traffic separation scheme shall avoid it by as wide a margin as is practicable"

12.2.

Please note that a Virtual Mark may be set to keep the fleet away from the South Burford Cardinal and this is defined as **ISORA Dublin Virtual mark 53° 17.110N 6° 00.100W**



13. Waypoints

- 13.1. Waypoints may be used as marks. If so, Rule 28 will be amended accordingly in accordance with the RYA / RORC Guidance – “Racing Around Waypoints” See website for details.
- 13.2. Evidence of rounding the “virtual” mark must be taken and may be requested by the Race Officer. This evidence may include:
- 13.3. Photographic (iPhone or similar) evidence of the yacht’s GPS showing its position at the mark.
- 13.4. Yacht’s chart plotter track showing the yacht rounding the “virtual” mark. This must be transmittable to ISORA by email.
- 13.5. The onus of proof of having rounded the WAYPOINT mark will be with each yacht.

14. ISORA YB Tracker

- 14.1. All boats entered in the race will be fitted with the YB Tracker. The Skipper, accepting the units will be responsible for the replacement cost of the unit in a situation that the unit gets lost or damaged.
- 14.2. The units can be collected from Peter Ryan / Peter Dunlop at Pwllheli by prior agreement.
- 14.3. **In order to set up the units all boats who are entered must declare that they are racing by 12.00 on Thursday** prior to the race day. This declaration is a WhatsApp message on the “ISORA – UK – 2024” or “ISORA – Irish – 2024” group stating that “Boat name” will be racing on Saturday. This is critical for the efficient running of the tracking system.
- 14.4. The trackers must be returned to Peter Ryan in the NYC immediately after the race or by special agreed arrangement.
- 14.5. The race progress can be tracked by following the YB Tracking app for iPhones and Android. On downloading the app, the “ISORA Series”.
- 14.6. Any queries relating to the Trackers should be dealt with by contacting Peter Ryan +353 87 2545037.

15. FINISH LINE

- 15.1. The finish line shall be between the Pier Ends at the Dun Laoghaire Harbour entrance.
- 15.2. The finish will be automatically recorded by the YB Tracker and the finish times will appear instantly on the app. There will be no Finisher on the line.
- 15.3. The finish time of the boat shall be recorded and posted on the CrewManager app.
- 15.4. **The above procedure is mandatory and deemed to be a “Declaration” that the yacht has completed the course in accordance with the sailing instructions.**
- 15.5. There is no time limit for the ISORA event.

16. RETIREMENTS

- 16.1. Post the information on the Crewmanager app.
- 16.2. Text ISORA on 00353 87 2545037.
- 16.3. For safety it is recommended to also inform the Coastguard by VHF.

17. Advertising

- 17.1. The event will be a Category C event.
- 17.2. All yachts may be presented with a sponsor's flag or decals, which must be displayed at all times (if provided).

18. Scoring System

- 18.1. Scoring will be in accordance with Appendix A of the Racing Rules of Sailing and for ISORA using the ISORA series scoring.
- 18.2. This race is weighted at 1.2 (see Section 16 Notice of Race & General Sailing Instructions)

19. Risk Statement

- 19.1. THE DECISION WITH REGARD TO STARTING AND CONTINUING A RACE LIES DEFINATIVELY WITH THE SKIPPER OF EACH BOAT AS HE / SHE ALONE IS AT ALL TIMES RESPONSIBLE FOR THE SAFETY OF HIS / HER OWN BOAT AND CREW
- 19.2. RRS Rule 4 of the Racing Rules of Sailing states: "The responsibility for a boat's decision to participate in a race or to continue racing is hers alone."
- 19.3. Sailing is by its nature an unpredictable sport and therefore inherently involves an element of risk. By taking part in the event, each competitor agrees and acknowledges that:
 - (a) They are aware of the inherent element of risk involved in the sport and accept responsibility for the exposure of themselves, their crew and their boat to such inherent risk whilst taking part in the event.
 - (b) They are responsible for the safety of themselves, their crew, their boat and their other property whether afloat or ashore.
 - (c) They accept responsibility for any injury, damage or loss to the extent caused by their own actions or omission.
 - (d) Their boat is in good order, equipped to sail in the event and they are fit to participate.
 - (e) The provision of a race management team, patrol boats and other officials and volunteers by the event organiser does not relieve them of their own responsibilities.
 - (f) The provision of patrol boat cover is limited to such assistance, particularly in extreme weather conditions, as can be practically provided in the circumstances.
 - (g) They are responsible for ensuring that their boat is equipped and seaworthy so as to be able to face extremes of weather; that there is crew sufficient in number, experience and fitness to withstand such weather; and that the safety equipment is properly maintained, stowed and in date and is familiar to the crew.
 - (h) Their boat is adequately insured, with cover of at least £3,000,000 against third party claims.

20. Safety

- 20.1. Competitors must adhere to the requirements of **Category 3 + Life Raft** of World Sailing Offshore Special Regulations 2021-2024 for this race. Details of these are on the ISORA website.

21. Personal Safety

- 21.1. RRS 1.2, 40 shall apply and it is the sole responsibility of the skipper to ensure that Life Jackets/Harness lines are carried for each member of the crew.

22. Pre-Race hosted at Pwllheli

- 22.1. Catering will be available in the Plas Heli on Friday evening.
- 22.2. The trackers will be issued at 06.00 on Saturday morning at Plas Heli marina.

23. Après Sail

- 23.1. If the race finishes at a "reasonable" time the National Yacht Club will be open for a post-race gathering. Closing time will be issued on the WhatsApp groups when the progress of the race is known



ISORA - Irish Sea Offshore Racing Association

ISORA - Promoting the sport of Offshore Racing in the Irish Sea .



About ISORA - Racing

ISORA provides offshore racing in the Irish Sea and two separate Coastal Series - in Ireland and UK

OFFSHORE RACING

COASTAL RACES