



# 2017 Sailing Instructions

## Supplementary Information

### Race 9 Dun Laoghaire – Pwllheli

### Version 1

Sailed under the burgee the **National Yacht Club**



## Saturday 5<sup>th</sup> August 2017 – 08.00 Start

This Supplementary Information MUST be read in conjunction with the ISORA Avery Crest OFFSHORE SERIES 2016 NOTICE OF RACE & GENERAL CONDITIONS. For details see [ISORA website](#)

### **SAFETY CATEGORY**

The requirements of **Category 3 Plus Liferaft** of ISAF Offshore Special Regulations 2016-2017 are recommended for this race. Details of these are on the ISORA website.

**THE DECISION WITH REGARD TO STARTING AND CONTINUING A RACE LIES ABSOLUTELY WITH THE SKIPPER OF EACH BOAT AS HE / SHE ALONE IS AT ALL TIMES RESPONSIBLE FOR THE SAFETY OF HIS / HER OWN BOAT AND CREW**

### **TIME OF START FOR ALL CLASSES**

- 07.55 Warning signal - Class flags (Numerals 1 & 2) hoisted
- 07.56 Preparatory Signal - Blue Peter hoisted
- 07.59 Blue Peter down
- 08.00 Start – Class flags down

The start may be broadcast on VHF Channel 37 (M1)

### **STARTING LINE**

The start line shall be located in Scotsman's Bay between the DBSC 'Pier' mark and an adjacent committee boat flying a NYC burgee. It may not be anchored and may be using engine power to hold station. This changes RRS 62.1(a).

## **THE COURSE (approx. 80 miles)**

**Start – Dun Laoghaire  
Finish – Pwllheli**

The course is approximately 80 mile long. The course will be posted on the ISORA website, texted and emailed to all entries and shall be available in the NYC on Thursday evening 3<sup>rd</sup> August. The course shall be broadcast on VHF Channel 37 (M1) before the start.

## **WAYPOINT MARKS.**

**Waypoints** may be used as marks. If so, Rule 28 will be amended accordingly in accordance with the RYA / RORC Guidance – “Racing Around Waypoints” See website for details

Evidence of rounding the “virtual” mark must be taken and may be requested by the Race Officer. **Any boats whose YB track is shown to be inside the mark will be requested to prove that a correct rounding had taken place.** This evidence may include:

- Photographic (iPhone or similar) evidence of the yacht’s GPS showing its position at the mark.
- Yacht’s chart plotter track showing the yacht rounding the “virtual” mark. This must be transmittable to ISORA by email.

The onus of proof of having rounded the WAYPOINT mark will be with each yacht.

## **Avery Crest YB TRACKER**

Boats entered in the race will be fitted with the Avery Crest YB Tracker. The Skipper will be responsible to cover the replacement cost of the unit in a situation that the unit gets lost or damaged.

The units can be collected from the NYC on Friday evening between 19.00 and 20.00. The units can also be collected on Saturday morning by special arrangement only.

**In order to set up the units all boats who are entered must declare that they are racing by no later than 12.00 on Wednesday 2<sup>nd</sup> August. This declaration is a text to +353 87 2545037 stating that “Boat name” will be racing on Saturday. This is critical for the efficient running of the tracking system.**

The trackers must be returned to Stephen Tudor in Pwllheli Sailing Club immediately after the race. Boats turning around on the line must deliver the unit to the NYC no later than Tuesday 8<sup>th</sup> August 2016.

The tracking can be followed on the YB Tracking app for iPhones and Android. On downloading the app, the “ISORA Avery Crest 2017 Series” in the My Race section.

Any queries relating to the Avery Crest Trackers should be dealt with by contacting Peter Ryan +353 87 2545037.

## **FINISH LINE**

The finish line shall be the transit between the Pwllheli Fairway Buoy and the Bridge at Plas Heli the Welsh National Sailing Academy and Events Centre with a bearing of 297deg magnetic or a back-bearing to the Fairway of 117deg magnetic (see chart below).

**Pwllheli Fairway Buoy** (Iso.2s) located N52 53.000 W4 22.900

**Plas Heli Bridge** located - N52 53.336 W4 24.230

**Please note this is not the usual line used as the start in Pwllheli.**

When approximately 10 minutes from the finish line yachts shall advise of their approach on VHF Ch 37 (M1) call sign ‘ISORA Finish’. Please note that the finisher will only have a handheld radio and you may not receive an acknowledgment to the first contact. There will be no sound signal at the finish. The Finisher may radio confirmation of the finish.

The finish time of your yacht and, if known, the name of the yacht ahead and behind shall be recorded. Also the time of rounding each mark should be recorded in the log by each boat. The finish time or, in the case where the yacht has retired, the time of the rounding of the last mark must be sent by text to ISORA at 00353 87 2545037 as soon as possible after the race. At night sail numbers shall be illuminated and radioed to the finisher when crossing the line on VHF Ch 37 (M1) call sign 'ISORA Finish'.

The above procedure is deemed to be a mandatory "Declaration" that the yacht has completed the course in accordance with the sailing instructions and has complied fully with the Safety requirements.

While there is no time limit for the ISORA race the finisher may not be in attendance at the finish line for later finishers.



## **RETIREMENTS**

Text ISORA on 00353 87 2545037.

For safety it is recommended to also inform the Coastguard by VHF.

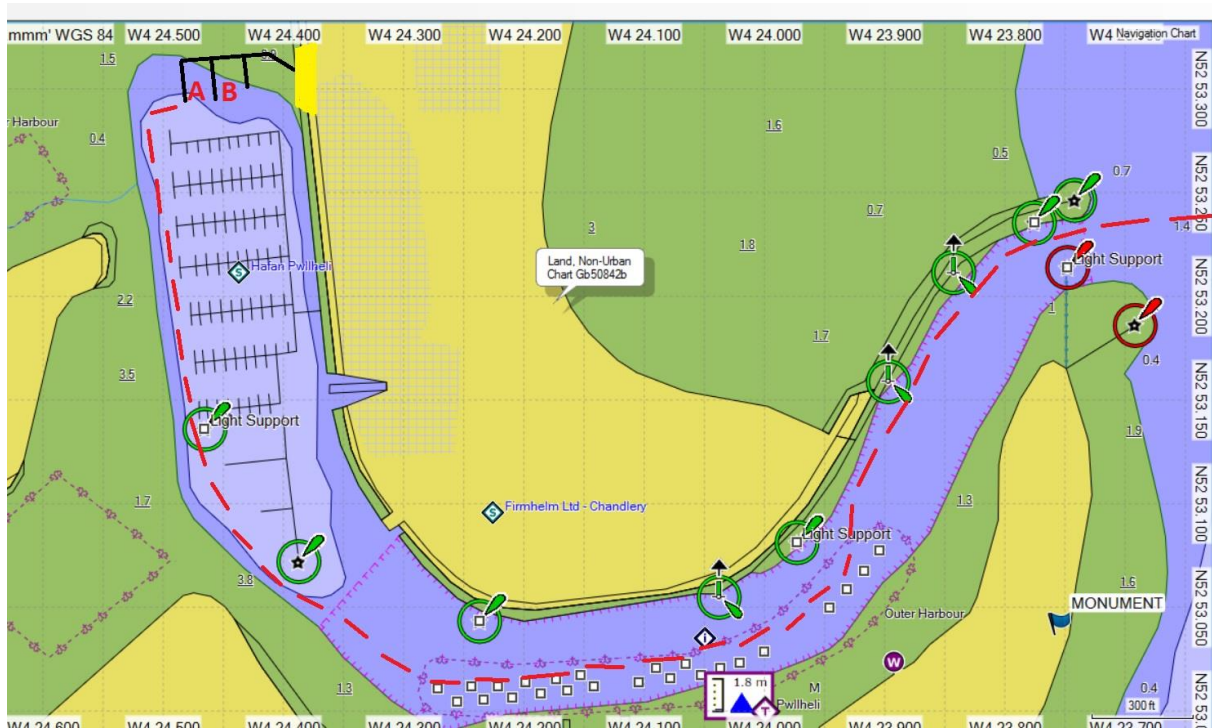
## **Berthing in Pwllheli**

Competitors are asked to proceed to the new academy pontoons to the north of the marina. As shown on the following chartlet and berth in the A & B bays. Free of charge to ISORA competitors. Also telephone Richard Tudor on +44 774 787 6241 (or call Jackknife on VHF Channel 37)

The Marina can be contacted on VHF Channel 80 using call-sign "Hafan Pwllheli" or on +44 1758 701 219. Details about the navigation in the channel are available here

<http://hafanpwllheli.co.uk/cms/index.php?cID=88>

or follow the suggested route in the chartlet.



## **After Racing**

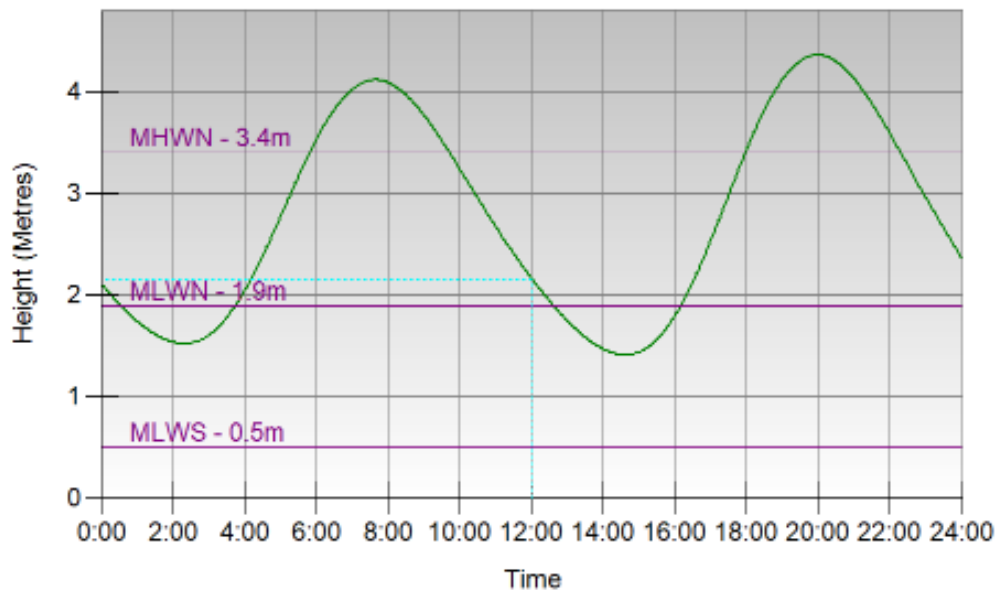
The crews are all invited for a post-race gathering in the Sailing Club with the usual warm Welsh welcome.

## **NOTES**

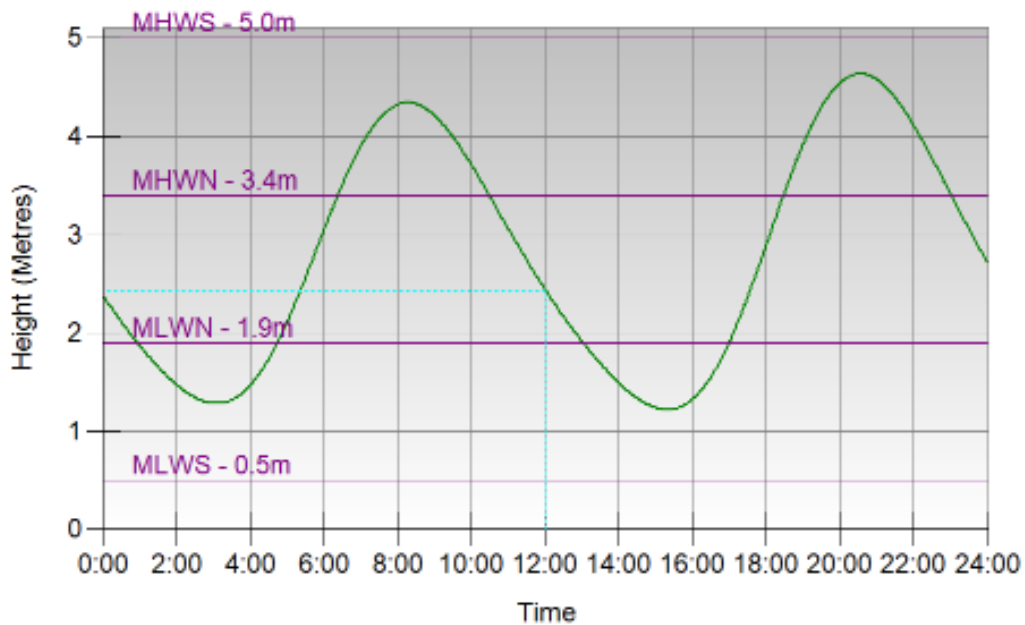
1. The time of crossing the finish line should be noted in the log.
2. Those boats that have AIS are requested to make them live during the race.
3. The Showers and toilets in the NYC will be available on Saturday from 06.30.
4. Catering will be available at NYC on Friday evening. Phone No. +353 (1) 280 5725.
5. **After racing all competitors are invited to a late bar with food at Pwllheli Sailing Club located in the new Welsh National Sailing Academy and Event Centre - telephone number 0044 1758614442**

**Tides at Pwllheli.**

**Pwllheli - Sat 5 Aug 2017**



**Pwllheli - Sun 6 Aug 2017**



**AVERYcrest**  
SKI CHALETS MERIBEL