



2012 Sailing Instructions **Supplementary Information** **Race 7**

Dun Laoghaire – Pwllheli

Saturday 18th August 2012

Sailed under the burgee the **National Yacht Club**

TIME OF START FOR ALL CLASSES

07.55 Warning signal

08.00 Start

The start may be broadcast on VHF Channel 37 (M1).

STARTING LINE

The start line shall be located in Scotsman's Bay between the DBSC 'Pier' mark and an adjacent committee boat flying a NYC burgee. It may not be anchored and may be using engine power to hold station. This changes RRS 62.1(a).

THE COURSE – 80 Miles (Subject to confirmation)

1. STARTING LINE
2. Muglins (s)
3. Moulditch (p) off Greystones
4. FINISH LINE at Pwllheli

The Course will be confirmed at 20.00 on the 17th August in the NYC. The course will be text to all entrants, placed on the ISORA website and broadcast afloat to the competitors on VHF Ch 37 (M1) before the start.

FINISH LINE

The finish line shall be a line between the **Monument** located to the south of the Pwllheli Harbour entrance and the **Pwllheli Fairway Buoy** (Iso.2s) located N52 53.000 W4 22.900. (See sketched below). **Please note this is not the usual line used as the start in Pwllheli.**

When approximately 10 minutes from the finish line yachts shall advise of their approach on VHF Ch 37 (M1) call sign 'ISORA Race Finish'. Please note that the finisher will only have a handheld radio and you may not receive an acknowledgment to the first contact.

There is no time limit.

At night sail numbers should be illuminated when crossing the finish line and the boat identified to the Finisher using VHF CH 37 (M1).

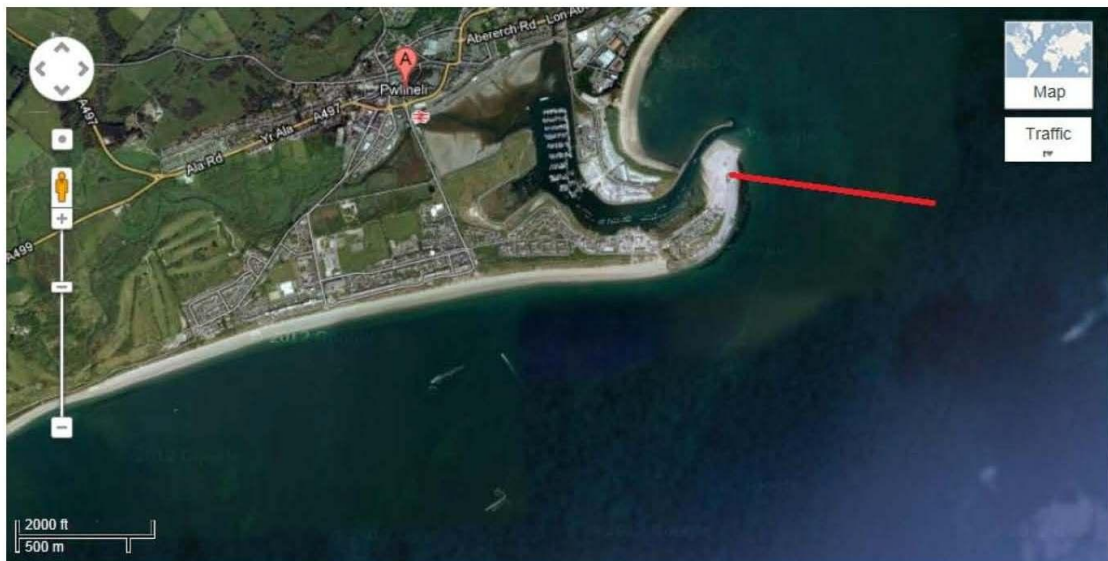
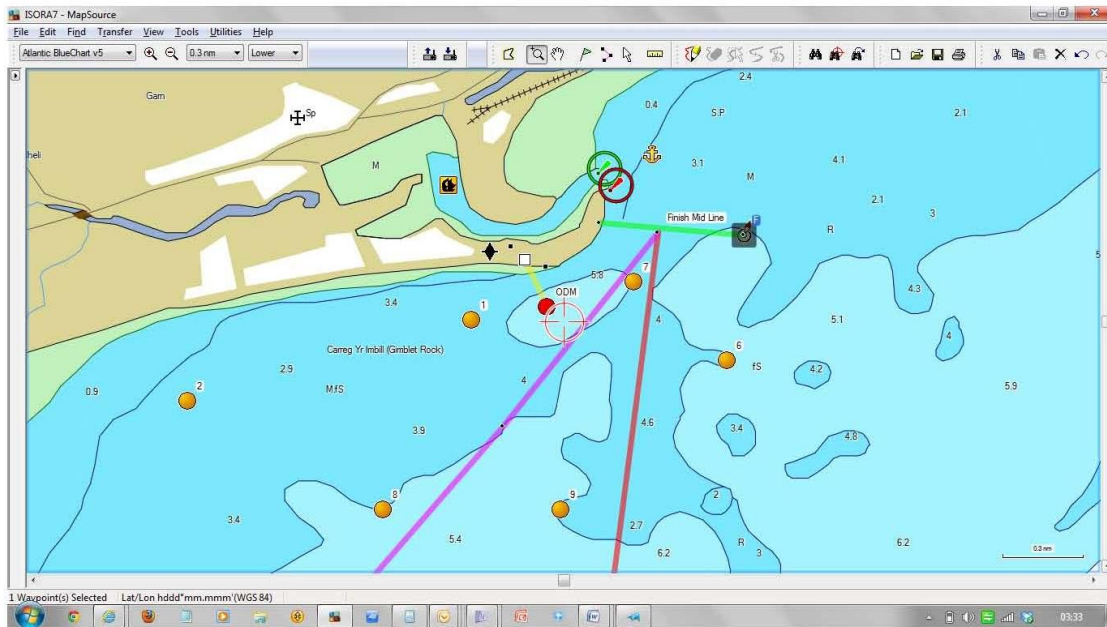
The time rounding each mark and the finish time should also be recorded in the log by each boat and sent by text to +353 87 2545037 on completion of the race or on retirement. The boats GPS should be used for the time adjusted for BST. This text is by way of a **MANDATORY Declaration that the boat completed the course and complied with all the rules and instructions.**

RETIREMENTS

Text ISORA on +353 87 2545037.

For safety it is recommended to also inform the Coastguard : Dublin Radio – Ch83 or Holyhead Coastguard on Ch16.

The Pwllheli Finish Line



Tides at Pwllheli.

Your attention is drawn to the tides at Pwllheli for Saturday and Sunday. See the tidal curves below.

It should be possible for a boat drawing 2.4m to enter and leave the marina 2 hours each side of High Water.

The Marina can be contacted on VHF Channel 80 or on +44 1758 701 219. Details about the navigation in the channel are available here <http://hafanpwllheli.co.uk/cms/index.php?cID=88>

