



2011 Sailing Instructions Supplementary Information Race 11 - Pwllheli to Howth James Eadie Race

Sailed under the burgee the National Yacht Club

Saturday 10th September 2011

TIME OF START FOR ALL CLASSES

- 07.55 Warning signal - Class flag (Numerals 1) hoisted
- 07.56 Preparatory Signal - Blue Peter hoisted
- 07.59 Blue Peter down
- 08.00 Start – Class flags down

The start may be broadcast on VHF Channel 37 (M1)

STARTING LINE

- The Start Line is a transit of the orange pole on the PSC Bridge, a white mast with an orange top section on the foreshore and the ODM (mark O). The seaward end of the line is bounded by an ODM (mark O). The shore end may be bounded by an IDM. Boats shall pass between these marks (when both are present), in the direction of the first mark of the course, to start.
- **Please note** – the inner distance mark IDM is not on station and has drifted to the west of the start line.
- **The ODM is a large yellow Welsh Water Mark.**

THE COURSE Approx 80 miles.

1. STARTING LINE
2. Bardsey Island (S)
3. FINISH LINE

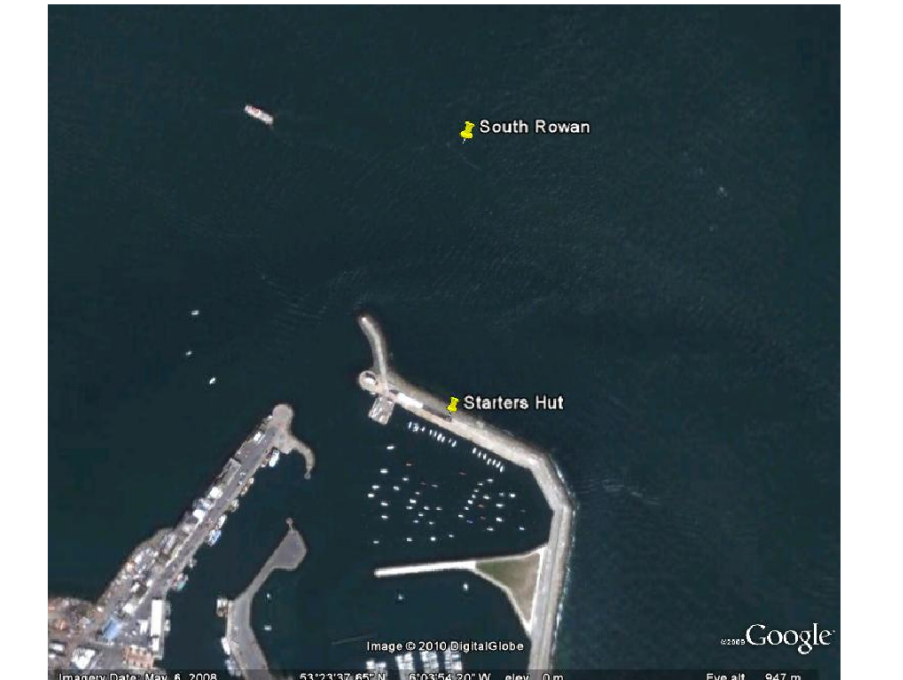
FINISH LINE

The finish line will be between the HYC Starters Hut on the East Pier and the South Rowan Buoy (Green, illuminated navigation mark) Q G 53 23.790N 6 03.941W – **NOT** Howth Mark – See Google Map below.

Boats approaching the finish should contact "ISORA Finisher" on Ch 37 (M1) when 30 minutes from the finish and again at 10 minutes from the finish. Please note that the finisher will only have a handheld radio and you may not receive an acknowledgment to the first contact.

The finish time should also be recorded in the log by each boat and sent by text to 00353 872545037. The boats GPS should be used for the time, adjusted for BST.

At night sail numbers should be illuminated when crossing the finish line. At night competitors are asked to contact the finisher as you cross the line to confirm your sail number.



RETIREMENTS

Telephone National Yacht Club 00353 1 2805725 and text 00353 87 2545037.
For safety it is recommended to also inform the Coastguard

NOTES

1. Boats entering Pwllheli Marina should take care with the tides and keep to the known deep sections of the channel. HW Pwllheli Friday 07.20 & 19.35.
2. Berthing will be available at Pwllheli marina on Friday night– Ch 80 and 37 (M1), call sign “Hafan Pwllheli”. Phone 0044 1758 701219.
3. Dinner will be available in Pwllheli Sailing Club on Friday evening.
4. Breakfast will be available in Pwllheli Sailing Club on Saturday morning. This needs to be booked and paid for with PSC on the Friday night.
5. Berthing will be available at Howth marina on Saturday night– Ch 80 and 37 (M1). The marina office can be contacted by phone at 00353 1 8392777.
6. If there is sufficient interest, bus transfer from Holyhead to Pwllheli will be arranged to meet both afternoon ferries from Dun Laoghaire and Dublin Port.